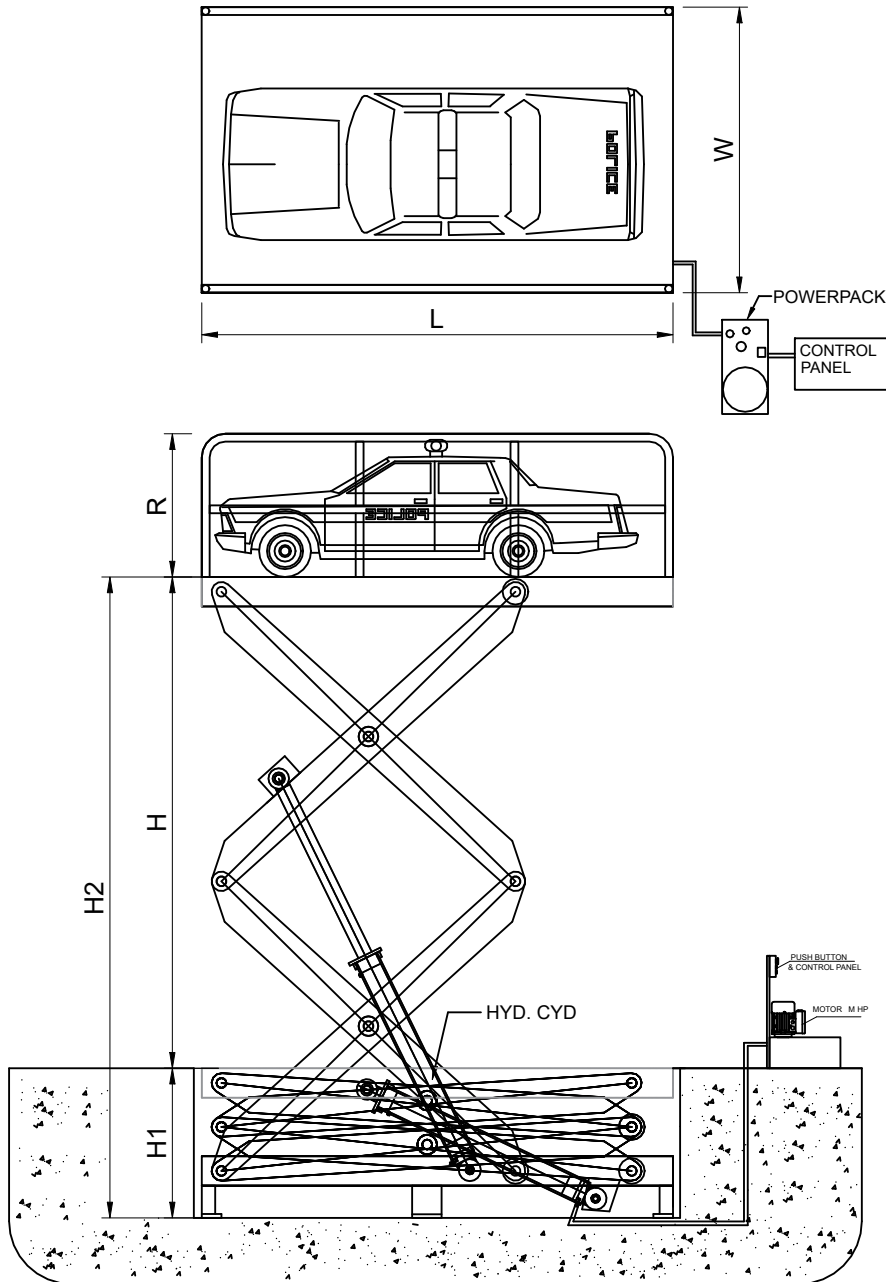


MOC : M.S.  
 SURFACE FINISH : PU ENAMEL SPRAY PAINTED  
 COLOUR : GOLDEN YELLOW  
 INCHING MODE LIFTING OPERATION.

LOCATION: Indoor / Outdoor

CAPACITY	C	10000 kg
PLATFORM LENGTH	L	5500 mm
PLATFORM WIDTH	W	2500 mm
MOTOR HP	M	10 HP
MIN HEIGHT	H1	1500 mm
MAXIMUM HEIGHT	H2	12200 mm
LIFT HEIGHT	H	10700mm

NOTE  
 1- M.S. RAILINGS ON TWO SIDES  
 2- HYDRAULIC HOSE LENGTH FROM CYLINDER TO POWERPACK WILL BE 5 M  
 3- LIFTING SPEED : APPROX. 3M/MIN.  
 4- LOWERING SPEED - ADJUSTABLE



ALL DIMENSIONS ARE IN MM

CUSTOMER:- M/S NAVNIT MOTORS LTD.				
PRODUCT:- CAR SCISSOR LIFT (STATIONARY)				
PROJECT:- CAPACITY : 10000 KGS.				
COMP.FILE NO : GA DRAWING				
PROJECTION:-	SCALE:- NTS	DATE	SIGN	
	DRAWN	08.02.2020	PRATIK	
	CHECKED	08.02.2020	PRATIK	REV
	APPROVED	08.02.2020	PRATIK	01

**JOIST-O-MECH**  
 (SINCE 1987)

THIS PRINT IS THE PROPERTY OF M/S JOIST-O- MECH RETURNED UPON REQUEST THIS PART MUST NOT BE SOLD TO ANY OTHER CONCERN.	SIZE
	A4
	SHEET
	1 OF 1